

MATERIAL

Housing: High-impact Acrylonitrile Butadiene Styrene (ABS resin),
UL 94 V-0 rated

LC Adapter

Housing: High-impact Polyetherimide (PEI resin), UL 94 V-0 rated

Dust Cover: High-impact PP or TPE, UL 94 V-0 rated

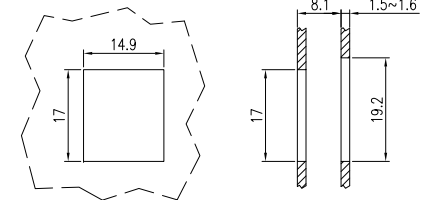
Sleeve: Ceramic

Plate: Stainless steel

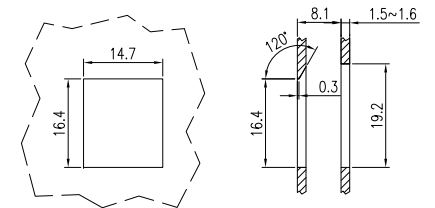
RoHS compliant

SUGGESTED CUTOUT: FLUSH-MOUNT APPLICATION

METAL



PLASTIC



DRAWN BY Ethan Wu				
APPROVED BY Jerry Su				
DIMENSIONS ARE MM [IN]				
TOLERANCES:				
~20	~50	~150	150~	ANGLE
±0.2	±0.4	±0.5	±1.5	2°
3rd Angle Projection				

CC

TITLE

OUTLETS, FACEPLATES & ACCESSORIES

DWG. NO.

HCIFP-72

REV.

1

CUSTOMER PARTS NO.

DATE

2012.02.01

SCALE

X

SHEET

1/1